

From the Paramount and Twentieth Century Fox Motion Picture TITANIC

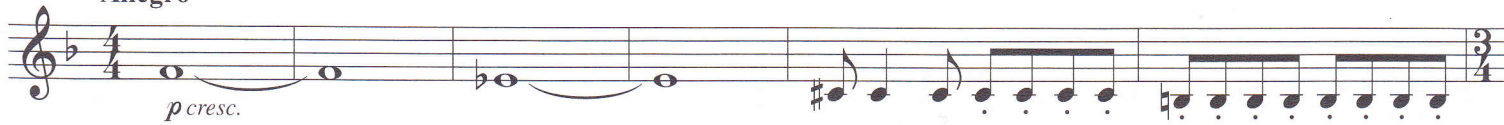
# TITANIC

Southampton • Take Her To Sea, Mr. Murdoch •  
Hard To Starboard • My Heart Will Go On

B $\flat$  BASS CLARINET

Music by JAMES HORNER  
Arranged by CALVIN CUSTER

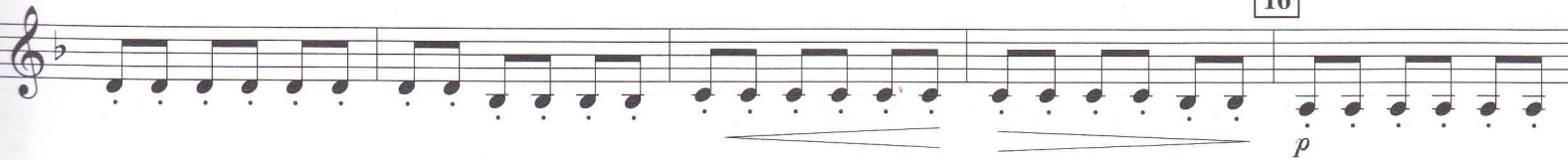
Allegro



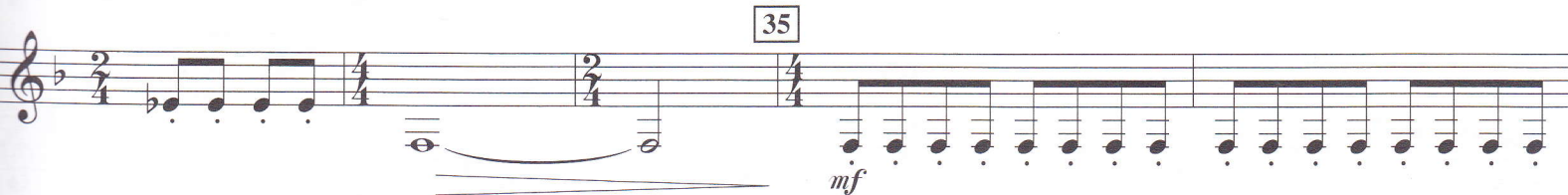
8 "Southampton"



16



24



35



43



SOUTHAMPTON • TAKE HER TO SEA, MR. MURDOCH • HARD TO STARBOARD  
By JAMES HORNER

Copyright © 1997 by Famous Music Corporation and Fox Film Music Corp.  
This arrangement Copyright © 1998 by Famous Music Corporation and Fox Film Music Corp.  
International Copyright Secured All Rights Reserved

MY HEART WILL GO ON (Love Theme From 'TITANIC')  
Music by JAMES HORNER Lyric by WILL JENNINGS

Copyright © 1997 by Famous Music Corporation, Ensign Music Corporation,  
TCF Music Publishing, Inc., Fox Film Music Corporation and Blue Sky Rider Songs  
This arrangement Copyright © 1998 by Famous Music Corporation, Ensign Music Corporation,  
TCF Music Publishing, Inc., Fox Film Music Corporation and Blue Sky Rider Songs  
International Copyright Secured All Rights Reserved

B $\flat$  BASS CLARINET

48 *f*

56 4 60 *p*

70 *f* *mf*

78 *mf*

86 *dim.* *p* *mf*

92 *poco a poco accel.* *mf*

100 *p a tempo*

107 A Bit Slower *mf* *cresc.* *f*

115 2

Detailed description: This is a page of a musical score for the B $\flat$  Bass Clarinet part. It contains ten staves of music, numbered 48 through 115. The music is written in a single treble clef with a key signature of one flat (B $\flat$ ). The score includes various musical notations such as notes, rests, slurs, and dynamic markings. Measure numbers are enclosed in boxes. Performance instructions like 'Twice as slow' and 'A Bit Slower' are written above the staves. Dynamic markings include *f*, *p*, *mf*, *dim.*, *cresc.*, and *a tempo*. Time signatures change throughout the piece, including 2/4, 4/4, 3/4, and 3/2. The piece concludes with a double bar line and a fermata in measure 115.

B $\flat$  BASS CLARINET

121 Allegro Moderato  
"Hard To Starboard"

Musical staff 121, starting with a treble clef and a key signature of one sharp (F#). The tempo is Allegro Moderato. The piece is titled "Hard To Starboard". The staff contains a melodic line with various rhythmic values and rests. Dynamics include *f*, *sub. pp accel.*, and *f*. The time signature changes from 3/4 to 4/4 and back to 3/4.

126 A bit Faster

Musical staff 126, continuing the piece. The tempo is "A bit Faster". The staff features a rhythmic pattern of eighth and sixteenth notes with accents (^). The dynamic is *ff*. The time signature changes from 4/4 to 3/4 and back to 4/4.

135

Musical staff 135, continuing the rhythmic pattern with accents (^). The dynamic is *ff*. The time signature changes from 4/4 to 3/4 and back to 4/4.

146

Musical staff 146, featuring rests of 4, 3, and 2 measures. The dynamic is *ff*. The time signature changes from 4/4 to 3/4 and back to 4/4.

154 Moderate Ballad Tempo  
"My Heart Will Go On"

Musical staff 154, starting with a treble clef and a key signature of one sharp (F#). The tempo is Moderate Ballad Tempo. The piece is titled "My Heart Will Go On". The staff contains a melodic line with a dynamic of *p* that crescendos to *pp*. The dynamic *cresc.* is also indicated.

164

Musical staff 164, continuing the melodic line with a dynamic of *p*. The staff includes first and second endings.

174

Musical staff 174, continuing the melodic line with a dynamic of *cresc.* leading to *mf*. The staff includes first and second endings.

184

Musical staff 184, continuing the melodic line with a dynamic of *cresc.* leading to *f*. The staff includes first and second endings.

1.

2.

Musical staff 184 continuation, featuring first and second endings. The dynamic is *cresc.*

194

Musical staff 194, starting with a treble clef and a key signature of one sharp (F#). The staff features a melodic line with accents (^) and a dynamic of *ff*.

1.

2.

Musical staff 194 continuation, featuring first and second endings. The dynamic is *molto allargando*.