

# SATCHMO!

(A Tribute To Louis Armstrong)

A medley including: What A Wonderful World • When The Saints Go Marching In • St. Louis Blues • Hello, Dolly!

ASSOON

Arranged by TED RICKETT

"What A Wonderful World"

Moderately

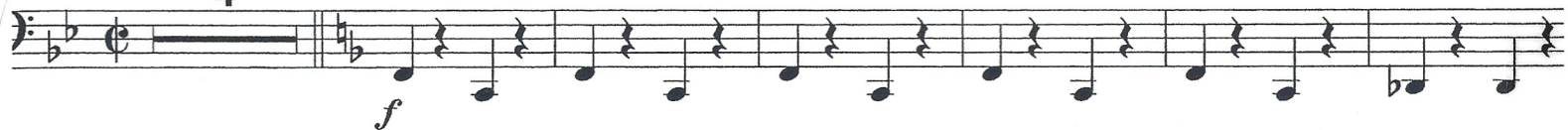


Swing

(♩ = ♪)

4

17 "When The Saints Go Marching In"



33



52

56



64 "St. Louis Blues" Swing (4 Feet)

(♩ = ♪)

sim.



(Time,

WHAT A WONDERFUL WORLD

Words and Music by GEORGE DAVID WEISS and BOB THEILE

Copyright © 1967 by Range Road Music Inc., Quartet Music, Inc. and Abilene Music, Inc.

Copyright Renewed

This arrangement Copyright © 2001 by Range Road Music Inc., Quartet Music, Inc. and Abilene Music, Inc.

International Copyright Secured All Rights Reserved

Used by Permission

ST. LOUIS BLUES

From BIRTH OF THE BLUES

Words and Music by W.C. HANDY

Copyright © 2001 by HAL LEONARD CORPORATION

All Rights Reserved

WHEN THE SAINTS GO MARCHING IN

Words by KATHERINE E. PURVIS

Music by JAMES M. BLACK

Copyright © 2001 by HAL LEONARD CORPORATION

International Copyright Secured All Rights Reserved

HELLO, DOLLY!

From HELLO, DOLLY!

Music and Lyric by JERRY HERMAN

© 1963 (Renewed) JERRY HERMAN

This arrangement © 2001 JERRY HERMAN

All Rights Controlled by EDWIN H. MORRIS & COMPANY, A Division of MPL Communications, Inc.

All Rights Reserved

# BASSOON

11

76

12

(♩ = ♩)

88

*sim.*

*f*

(♩ = ♩)

## 104 Hard Swing

2

Moderately slow (♩ =  $\frac{3}{4}$ )

## 119 "What A Wonderful World"

*mp*

3

3

127

135

*f*

139

3

3

3

3

3



Satchmo

BASSOON

143

Two staves of musical notation. The first staff begins with a treble clef, a key signature of one flat (B-flat), and a dynamic marking of *mf*. It contains a series of eighth and quarter notes. The second staff continues the melody, ending with a half note and a fermata. A crescendo hairpin is shown below the staff, with dynamic markings *mp* and *rit.* (ritardando).

Brightly 156 Swing (♩ = ♩<sup>3</sup>)

Two staves of musical notation. The first staff starts with a repeat sign and a key signature change to two flats (B-flat and E-flat). It features a series of eighth notes with accents (>) and dynamic markings of *f* and *mf*. The second staff continues the rhythmic pattern.

164 "Hello Dolly"

14

Two staves of musical notation. The first staff contains eighth notes with accents. The second staff features a 14-measure rest, followed by a half note and a fermata, with a dynamic marking of *f* and an accent (^).

180

Two staves of musical notation. Both staves consist of eighth notes with accents (>). The second staff includes a sharp sign (#) on the eighth line.

192

Two staves of musical notation. The first staff contains eighth notes with accents. The second staff features a series of eighth notes with accents, followed by a half note and a fermata, with an accent (^) above the final note.

201 Slower

Two staves of musical notation. The first staff begins with a half note and a fermata, followed by eighth notes with accents. The second staff continues the melody, ending with a half note and a fermata, with a dynamic marking of *rit.* and *fp* (fortissimo piano).